

# What You may NOT KNOW about

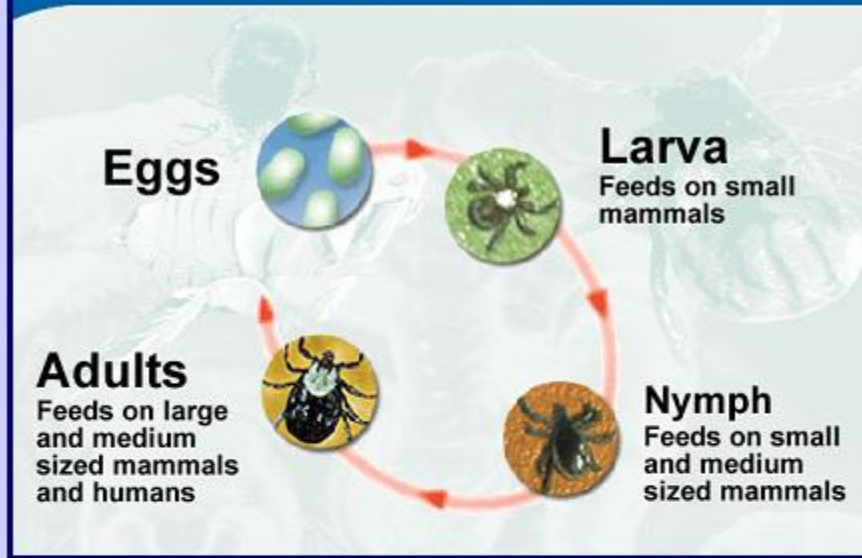


# TICK?

*'Ticks are the foulest and nastiest creatures that be.'* —

— *Pliny the Elder*

## Typical Tick Life Cycle



**1** 6 legged larva emerges from egg and immediately look for host meal.

Once engorged larva drops to the ground to molt and develop into the nymph.

**2** 8 legged nymph seeks a second host to feed on. The engorged nymph drops on the ground and molts to become an adult tick.

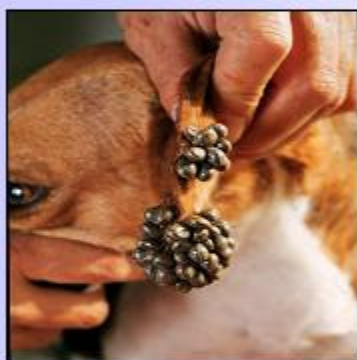


**3** Tick attaches to the host and sucks blood. During sucking, tick regurgitates and transmits the blood parasites to the host (i.e. dog)



**Engorged female tick after sucking blood**  
After having ingested a large volume of blood, the female drops onto the environment, lays eggs (2000 to 20000, dependent on species) and dies.

**Do u know that..**  
The volume of blood taken by nymphs and adult females may be up to **3x** the apparent volume of the engorged tick.



### What are Ticks?

- Ticks **lives on blood** of the hosts, which could be mammals (dog, cat, human), birds, reptiles, amphibians.
- There are **4 major types** of dog ticks, namely brown dog tick, American dog tick, deer tick and lone star tick.
- Brown dog tick is **3 host tick**, which means the same tick may feed on 3 different hosts during his/her whole life-span.

### Why are ticks bad?

It causes

- **Anemia** due to blood loss
- **Tick toxicosis**
- **Skin allergy and inflammation** at the bite site.
- **Blood parasite infection**

\* Blood parasites get transmitted from tick to dog **after 48 hours** of attachment

### Why are ticks so difficult to control?

- They are **temporary parasites**.
- They are **widely dispersed** in the environment.
- They have a **remarkable longevity** (months to years)
- They have **huge reproductive capacity** (up to thousands of eggs/females)

### How to prevent blood parasites?



**Rule of thumb:**  
Kill adult ticks **within 48 hours**

**When removing the attached tick from the body...**

**Do not squeeze, crush or puncture the body of the tick !**

\* Crushing may cause tick to regurgitate its stomach contents into the skin, increasing the possibility of blood parasite infection of the dog.